

# Metal Surgery Milwaukee LTD

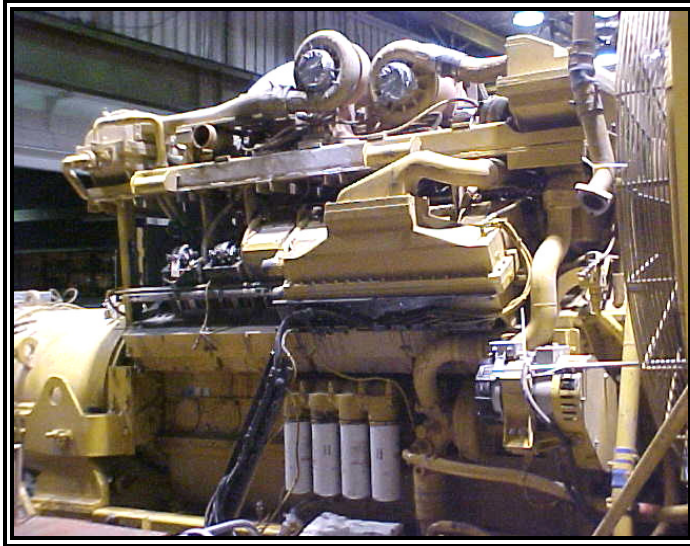
182 W. Oklahoma Ave. Building #23

Milwaukee, WI 53207

Phone 414-744-8313 Fax 414-744-8770

[www.metalsurgery.com](http://www.metalsurgery.com) e-mail: [metalsu@execpc.com](mailto:metalsu@execpc.com)

## PLATING CUMMINS ENGINE BLOCK ON-SITE



**MINIMAL DISASSEMBLY IS  
REQUIRED IN REPAIRING  
THIS 16CYL CASE. (LEFT)**

**EROSION OF LOWER SLEEVE  
BORE RESULTS IN LEAKAGE  
FROM WATER JACKET.  
(BELOW)**

**(Lower left)**

**ERODED AREAS ARE COPPER  
PLATED FOR BUILD UP.**

**(Lower right)**

**COPPER PLATING WAS HAND  
FINISHED & PLATED WITH NICKEL  
TO MFG. SPECS. COMPLETING  
REPAIR.**

